



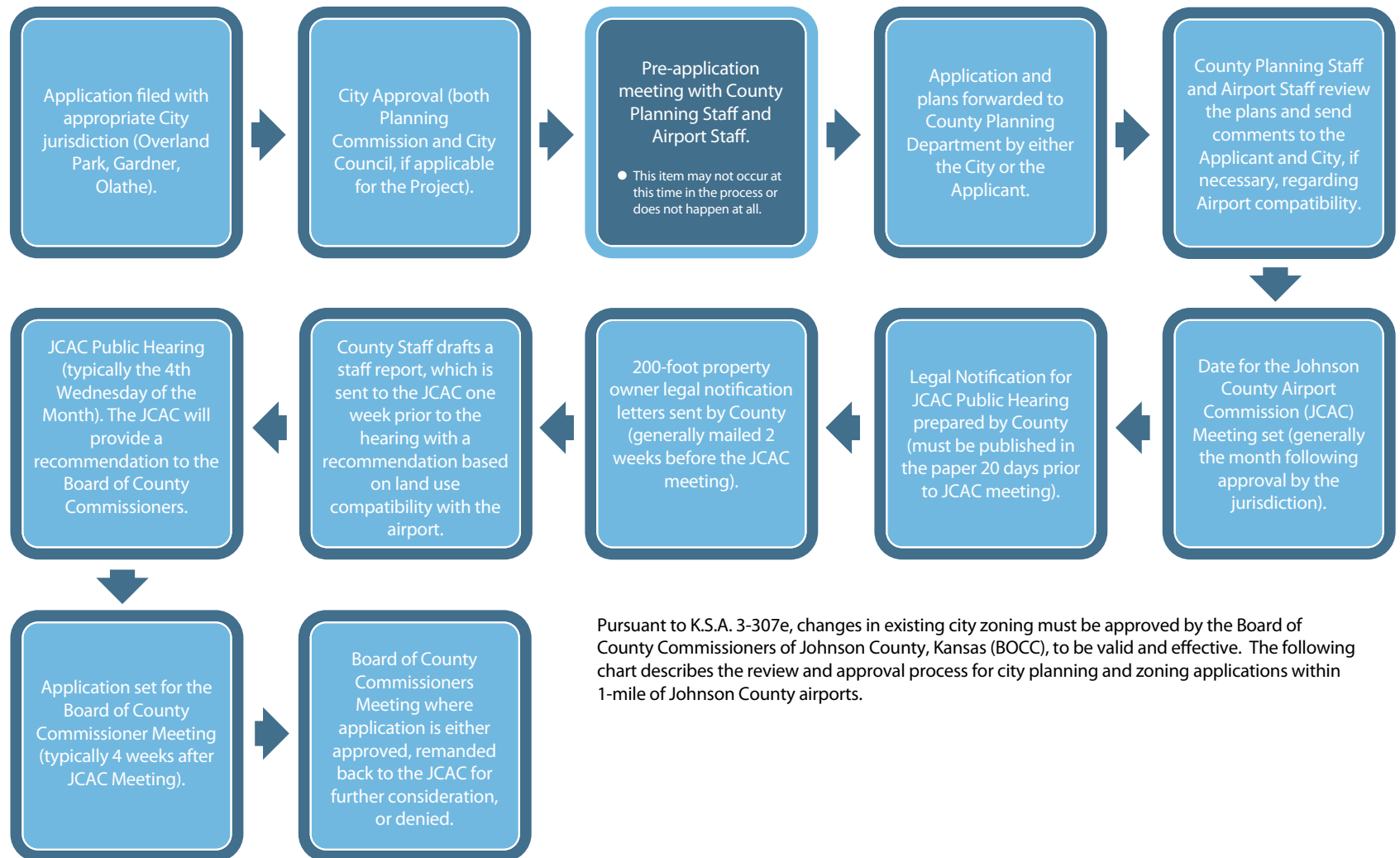
## ***Purpose and Scope Overview***

- **Responsibilities and Requirements**
  - Federal Government
  - State of Kansas
  - City/County Governments
- **Assumptions**
  - ALP/approved airport diagrams
  - Aviation activity forecasts
  - Future noise exposure contours
- **Limitations**
  - Board of County Commissioners has no authority over aircraft operations
  - Not a specific development plan
  - Not retroactive to existing non-conforming land uses
  - Focuses on off-airport land uses



## Approval Process

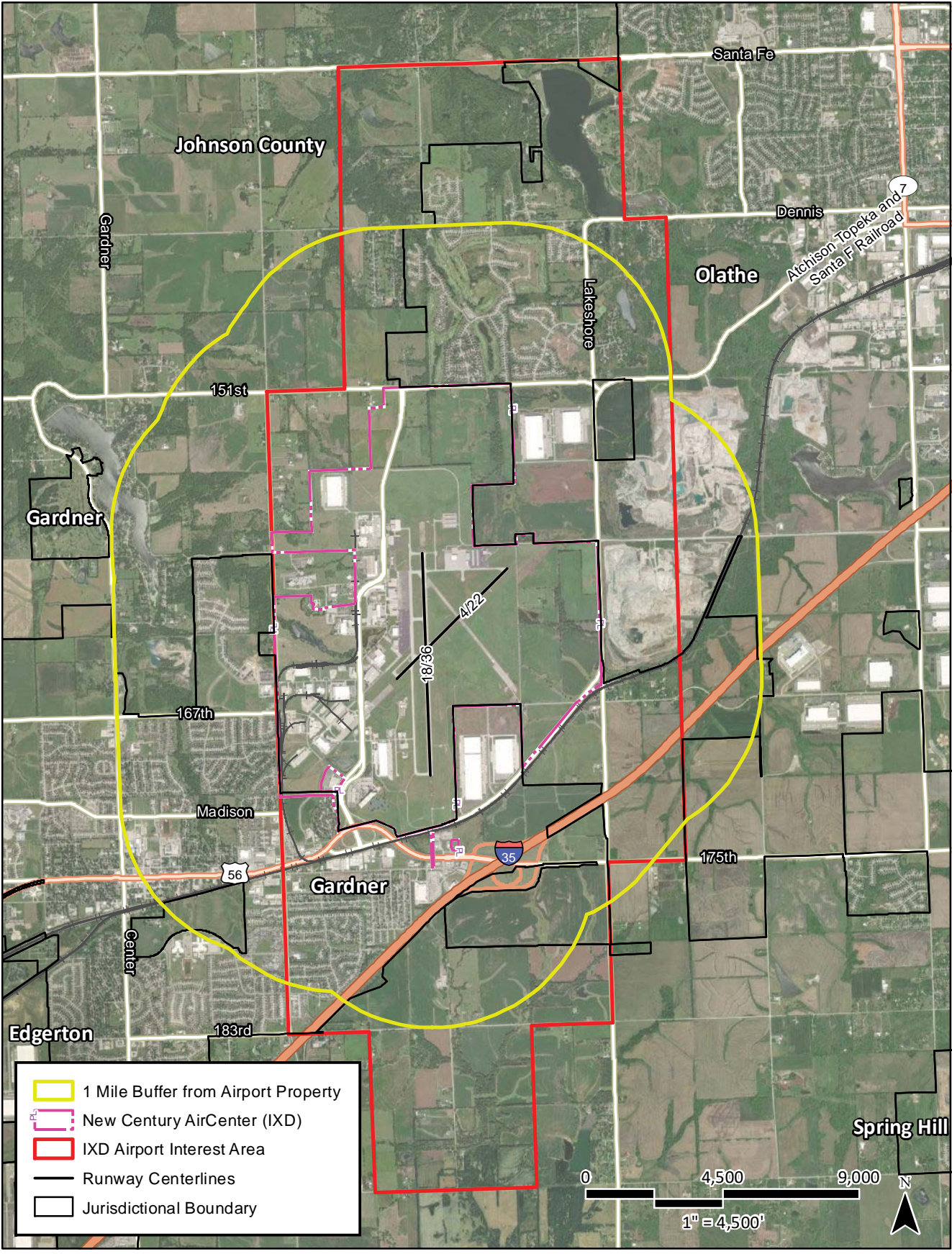
### CURRENT PROCESS



Pursuant to K.S.A. 3-307e, changes in existing city zoning must be approved by the Board of County Commissioners of Johnson County, Kansas (BOCC), to be valid and effective. The following chart describes the review and approval process for city planning and zoning applications within 1-mile of Johnson County airports.

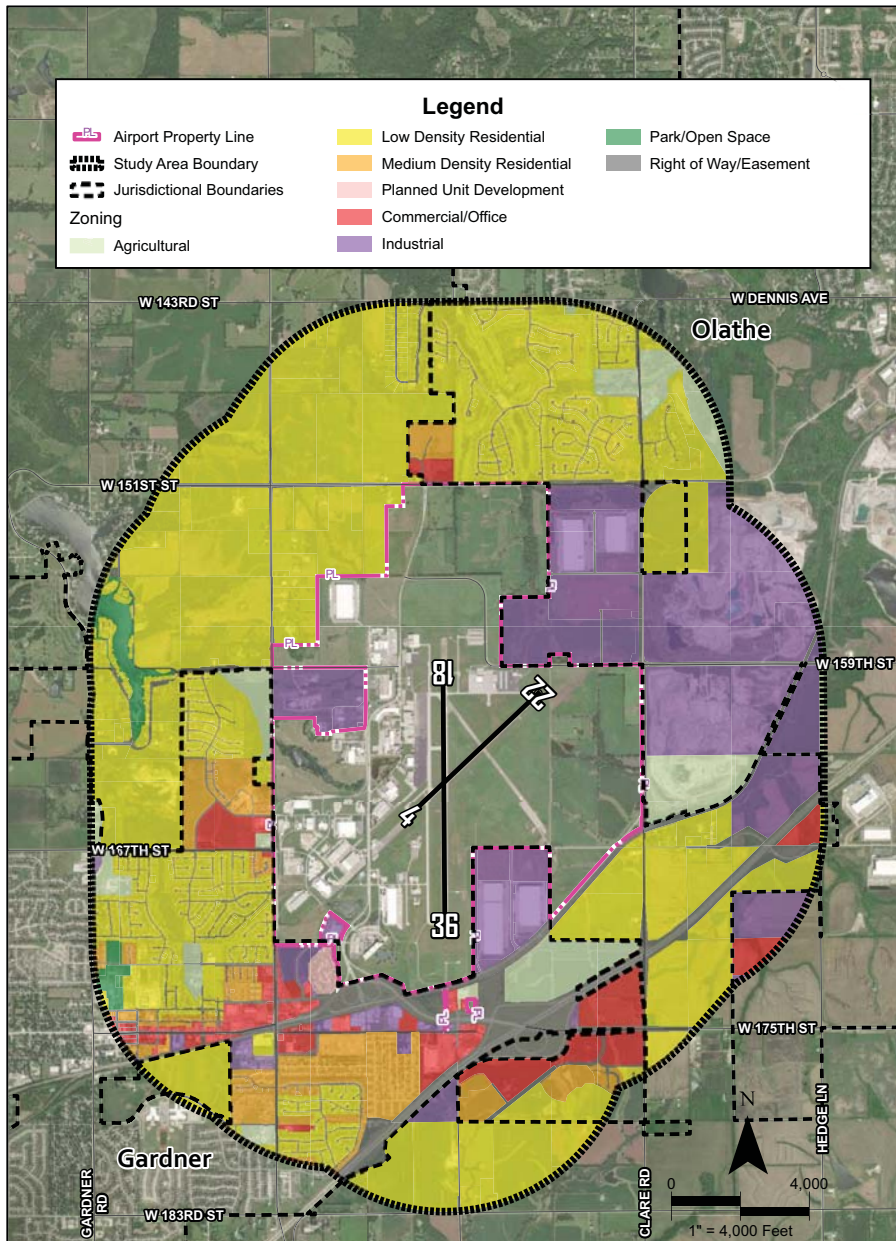


# Airport Interest Area vs. 1-Mile Review Area

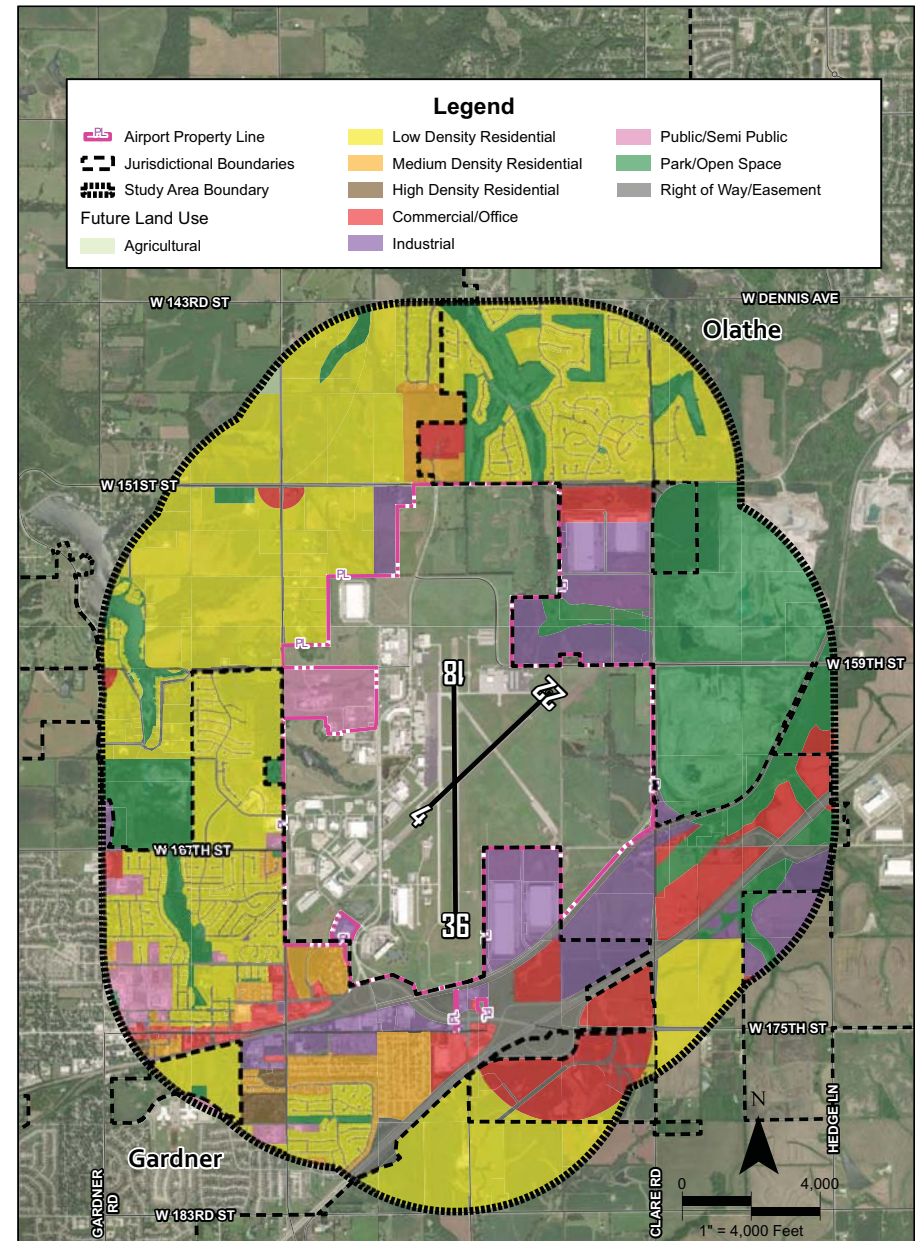




## Zoning Parcels



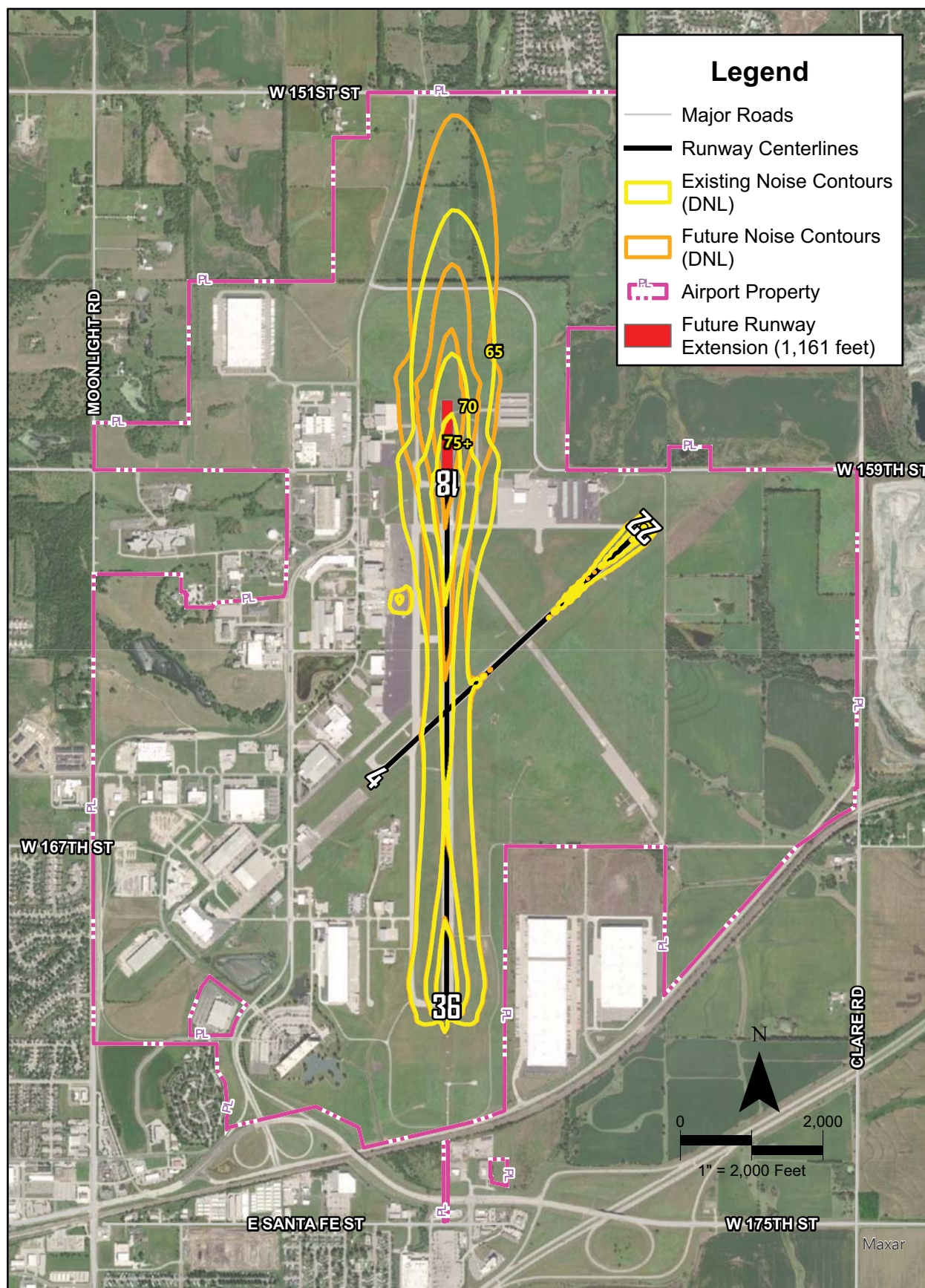
## Future Land Use Parcels





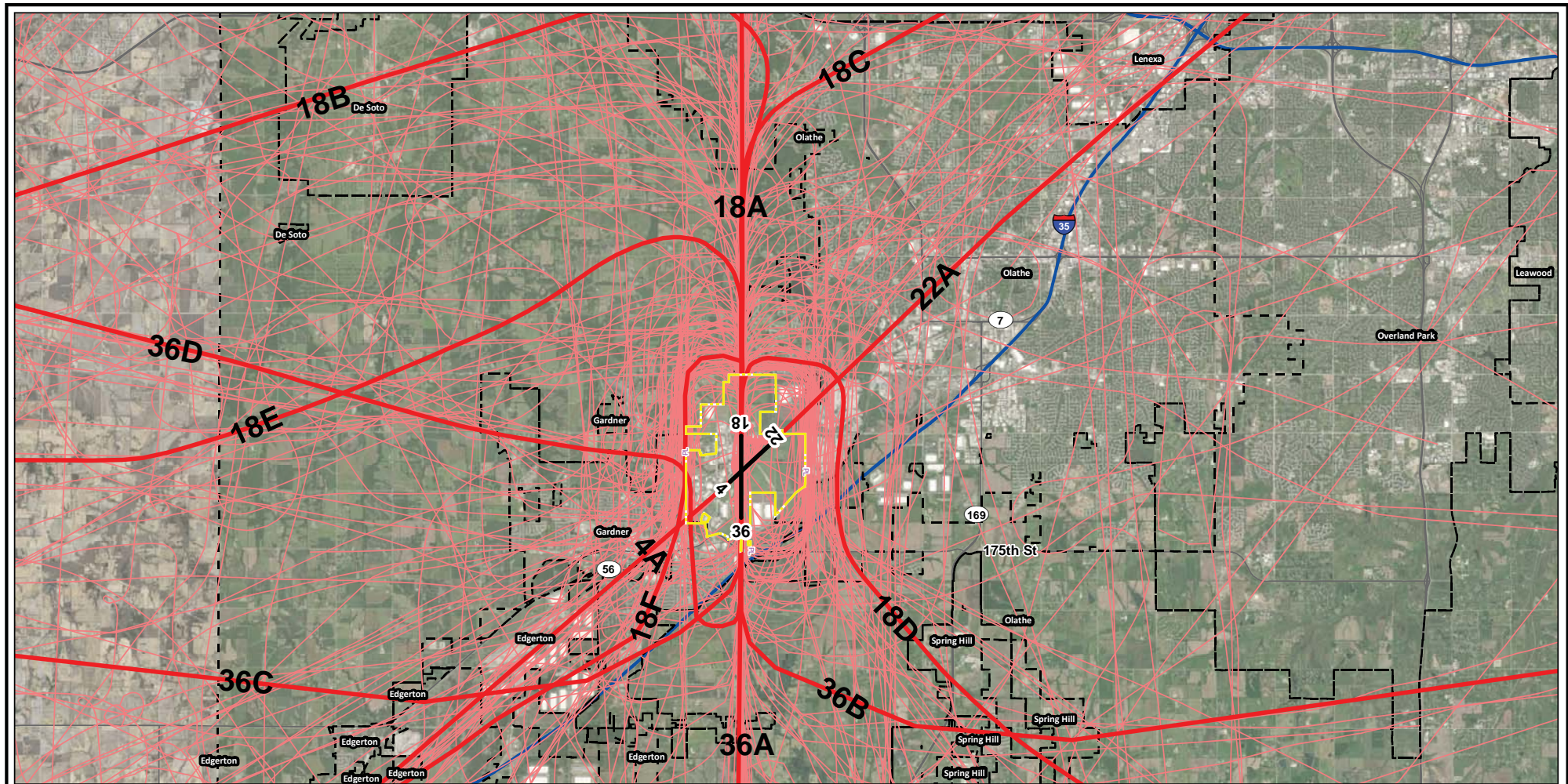


# Noise Contours





# Arrival Flight Tracks

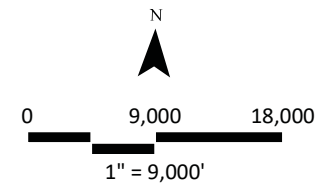


## Legend

- Airport Property Boundary
- Municipal Boundary
- Interstate
- Highway
- Consolidated Arrival Tracks
- Arrival Tracks

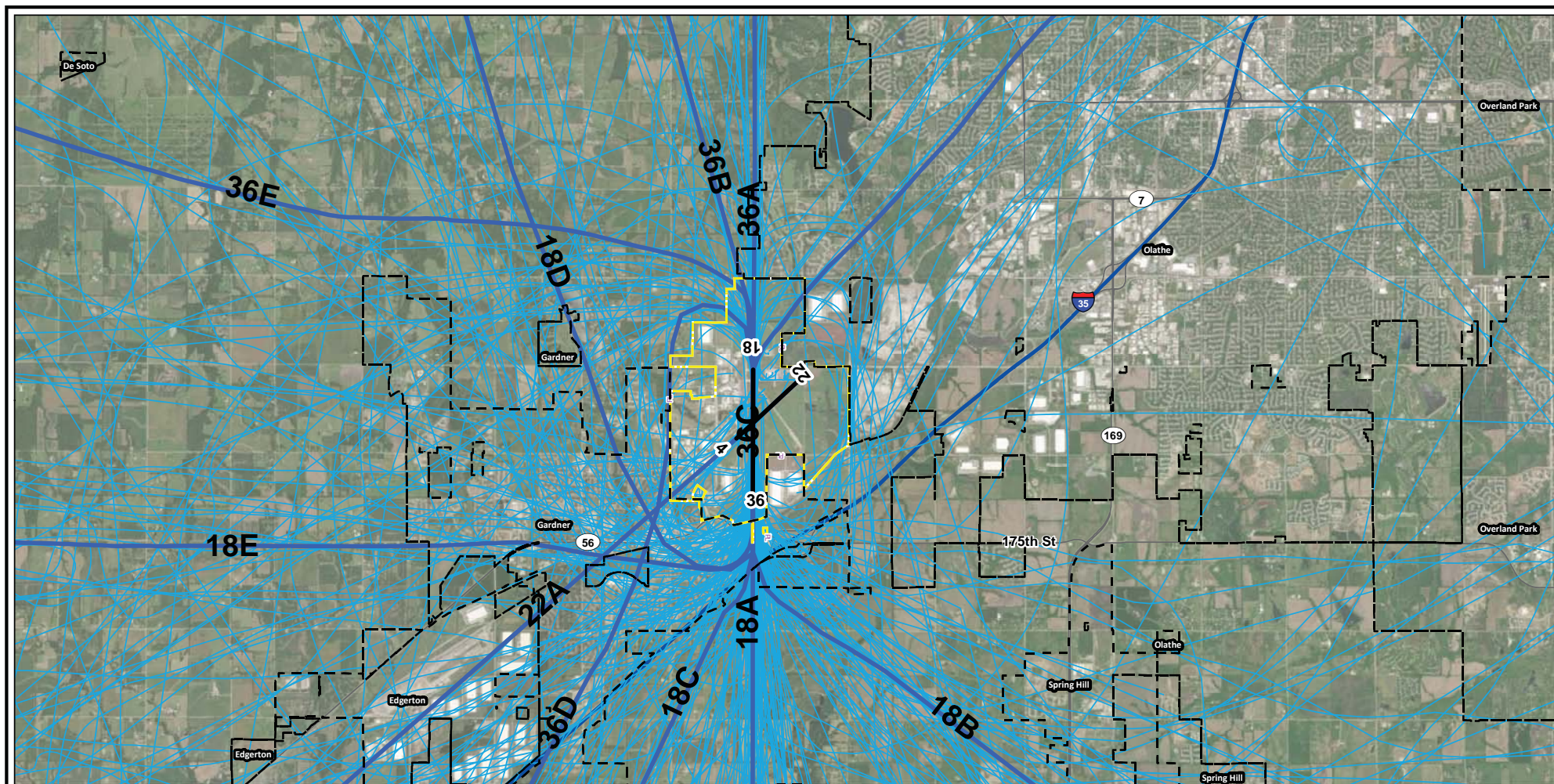
Source: Coffman Associates Analysis,  
ESRI Basemap Imagery, Accessed (2022),  
TIGER/Line

Radar Flight Tracks:  
November 21, 2022 - December 2, 2022





## Departure Flight Tracks

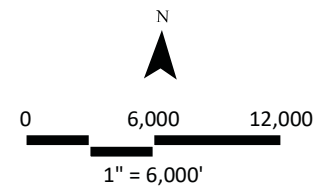


### Legend

- Airport Property Boundary
- Municipal Boundary
- Consolidated Departure Tracks
- Departure Tracks
- Interstate
- Highway

Source: Coffman Associates Analysis,  
ESRI Basemap Imagery, Accessed (2022),  
TIGER/Line

Radar Flight Tracks:  
November 21, 2022 - December 2, 2022





# Helicopter Flight Tracks

