

Purpose and Scope Overview

- **Responsibilities and Requirements**
 - Federal Government
 - State of Kansas
 - City/County Governments
- **Assumptions**
 - ALP/approved airport diagrams
 - Aviation activity forecasts
 - Future noise exposure contours
- **Limitations**
 - Board of County Commissioners has no authority over aircraft operations
 - Not a specific development plan
 - Not retroactive to existing non-conforming land uses
 - Focuses on off-airport land uses



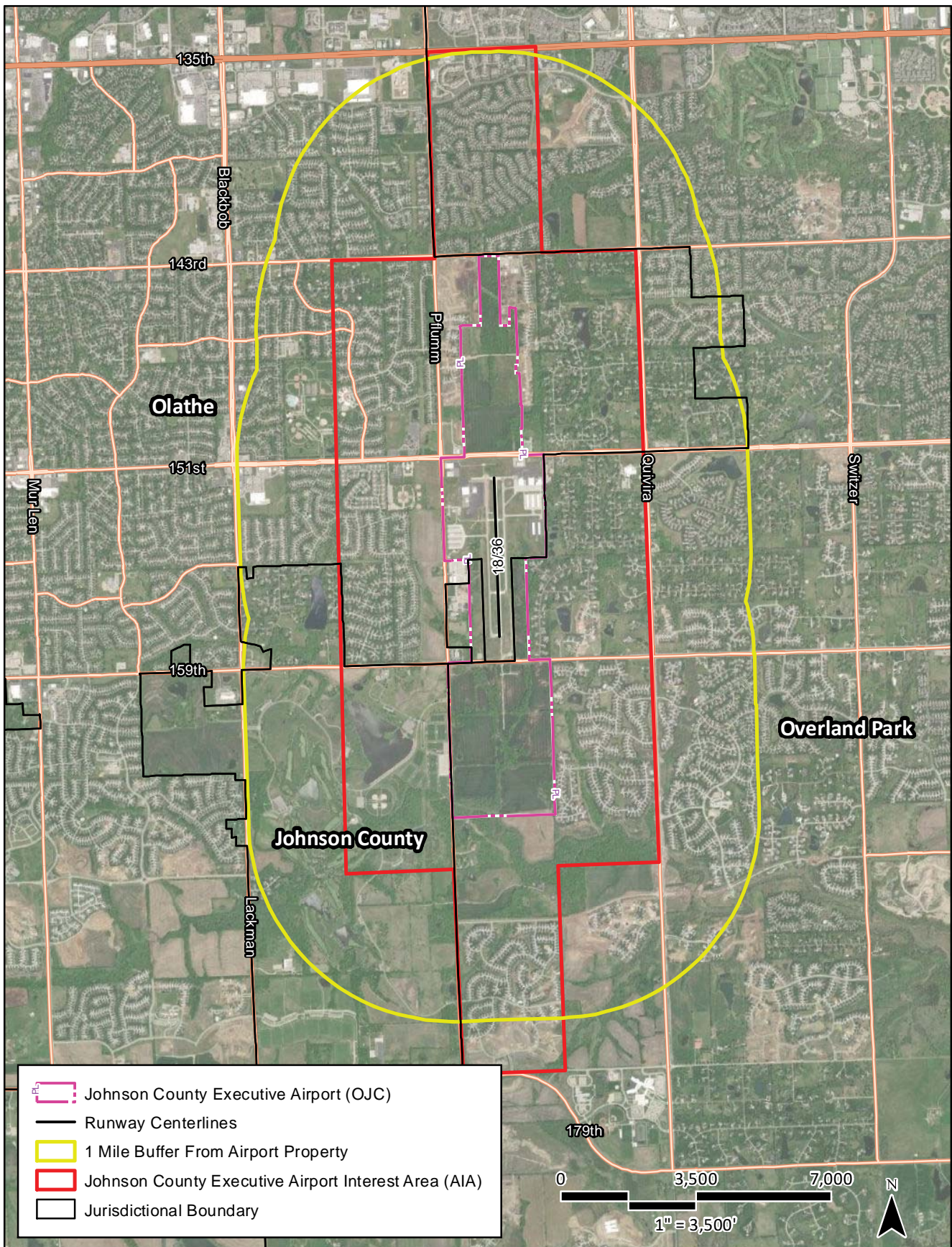


Approval Process



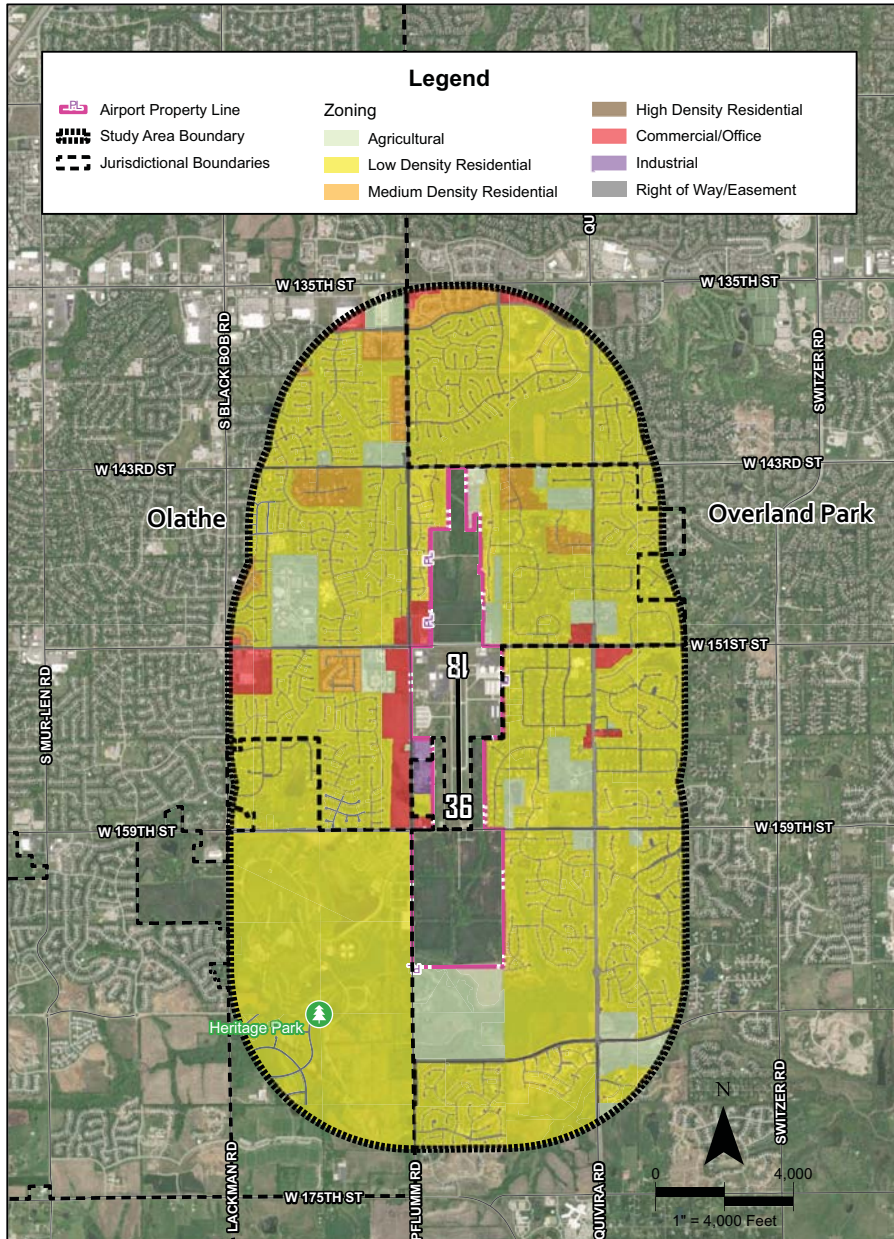
Pursuant to K.S.A. 3-307e, changes in existing city zoning must be approved by the Board of County Commissioners of Johnson County, Kansas (BOCC), to be valid and effective. The following chart describes the review and approval process for city planning and zoning applications within 1-mile of Johnson County airports.

Airport Interest Area vs. 1-Mile Review Area

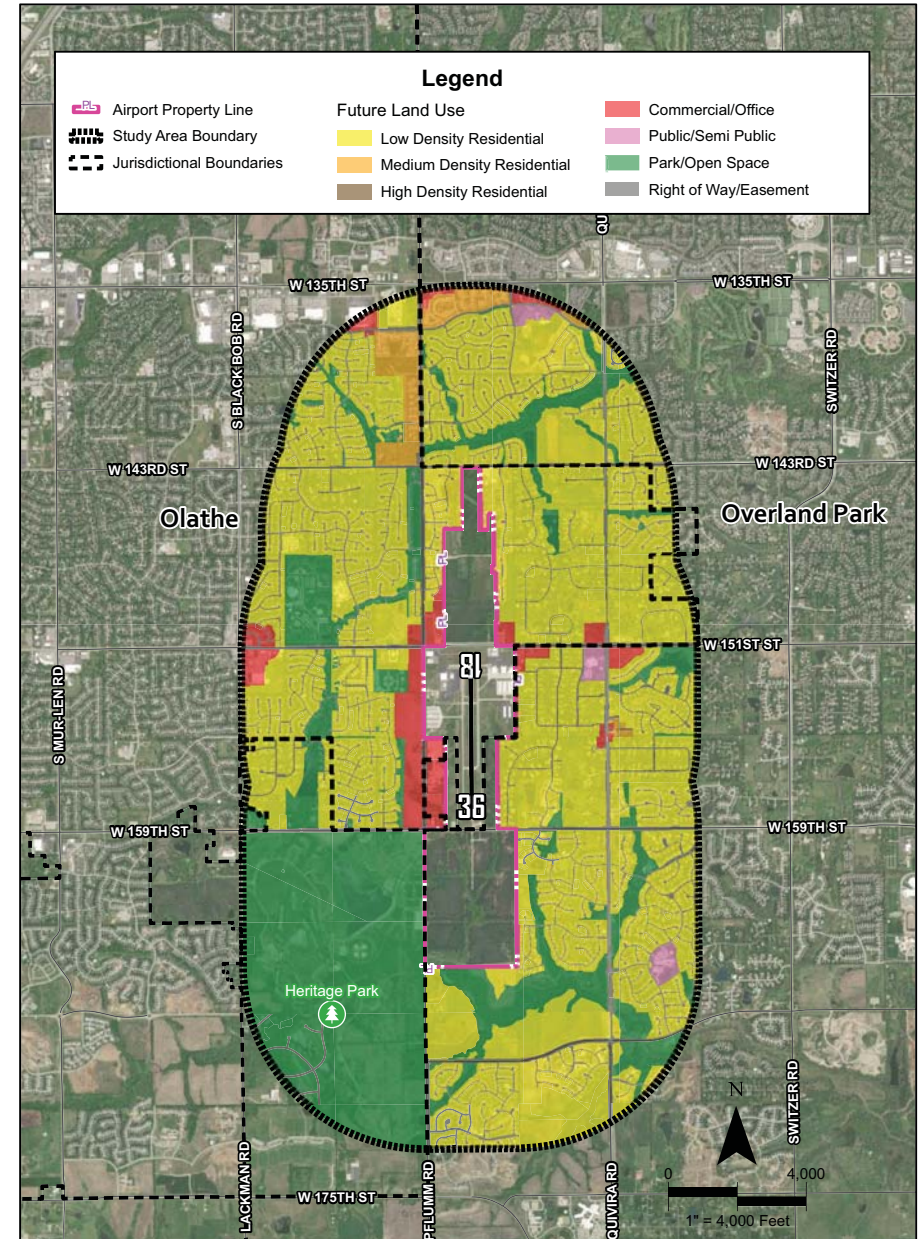




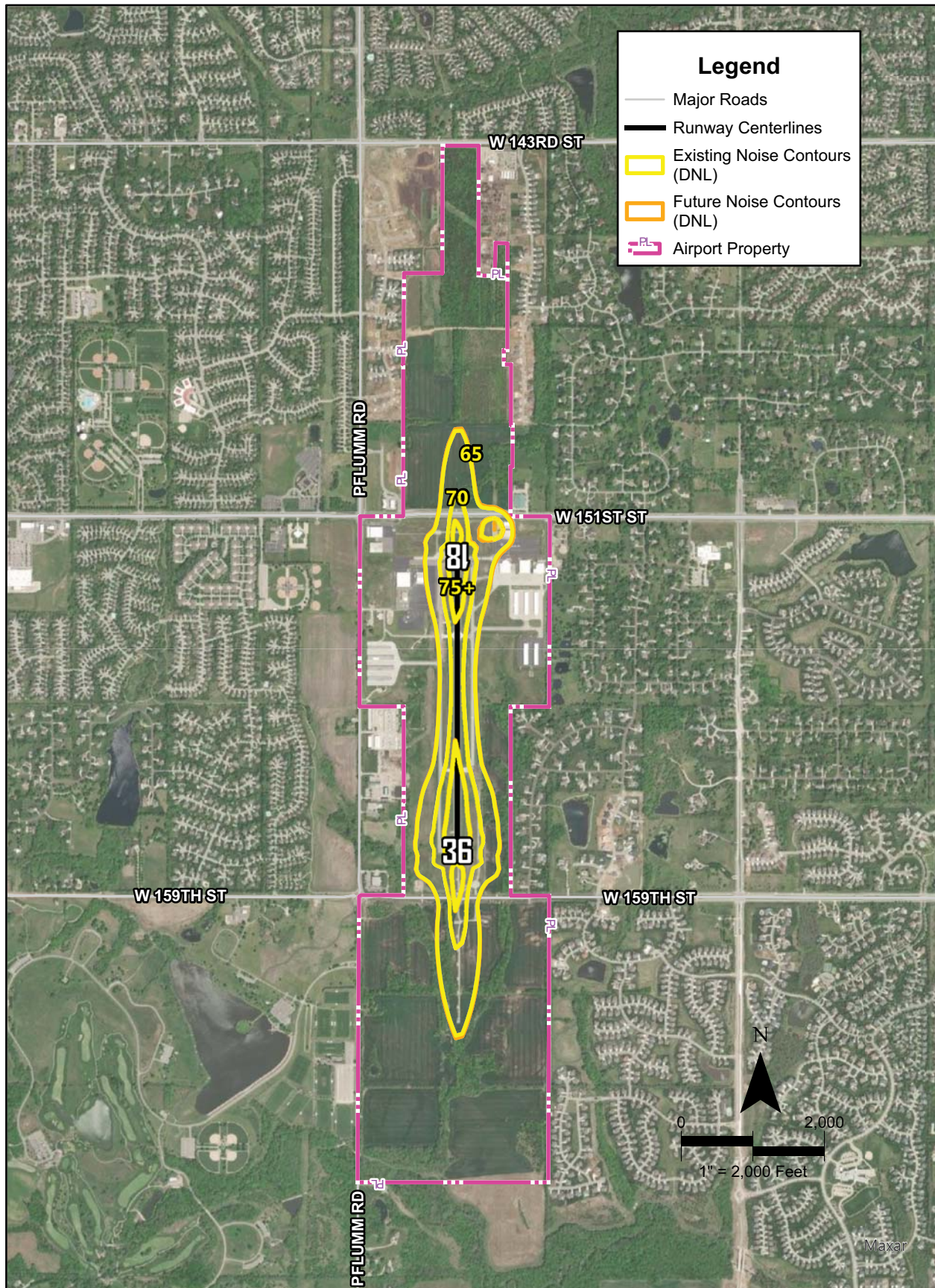
Zoning Parcels



Future Land Use Parcels

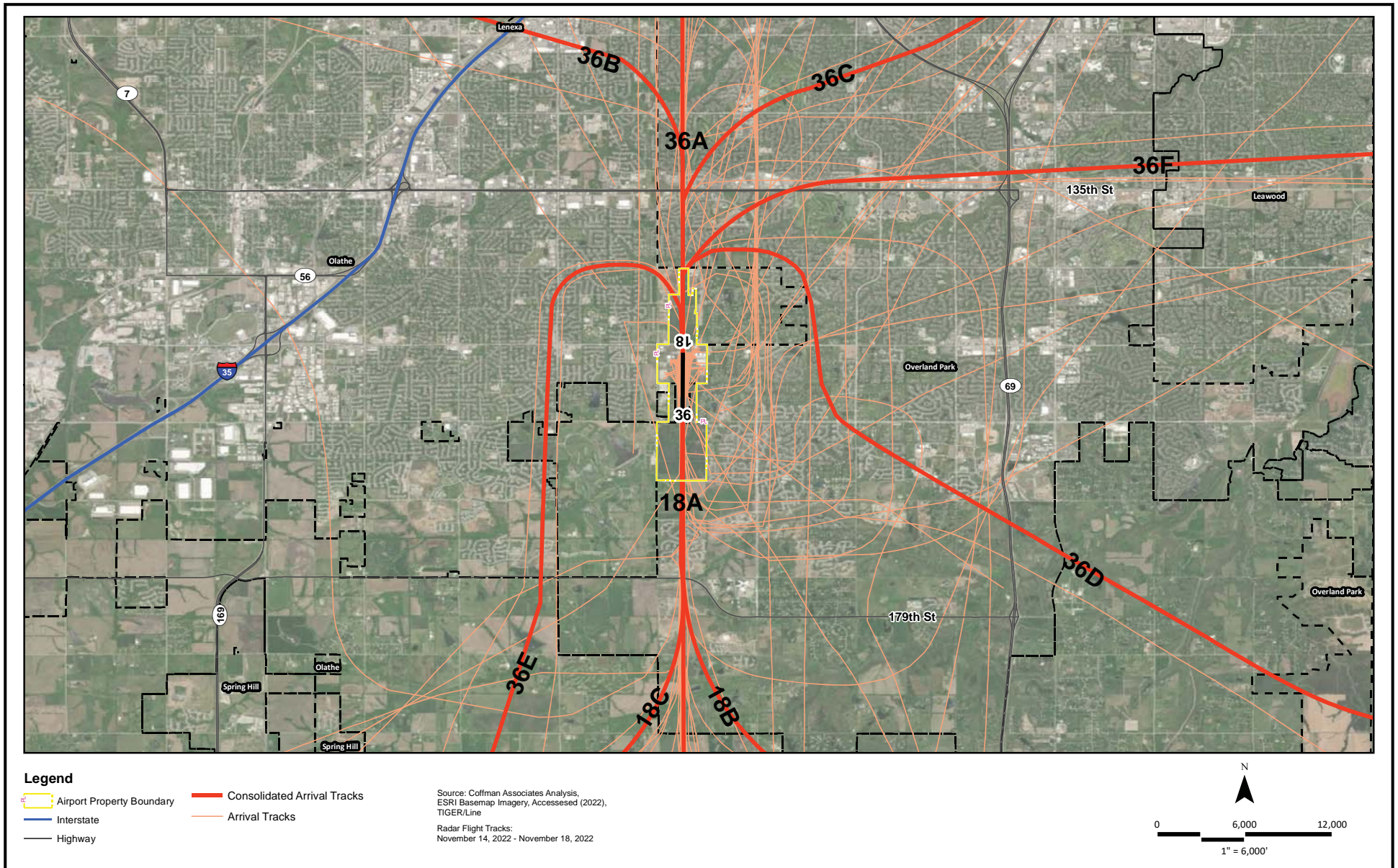


Noise Contours



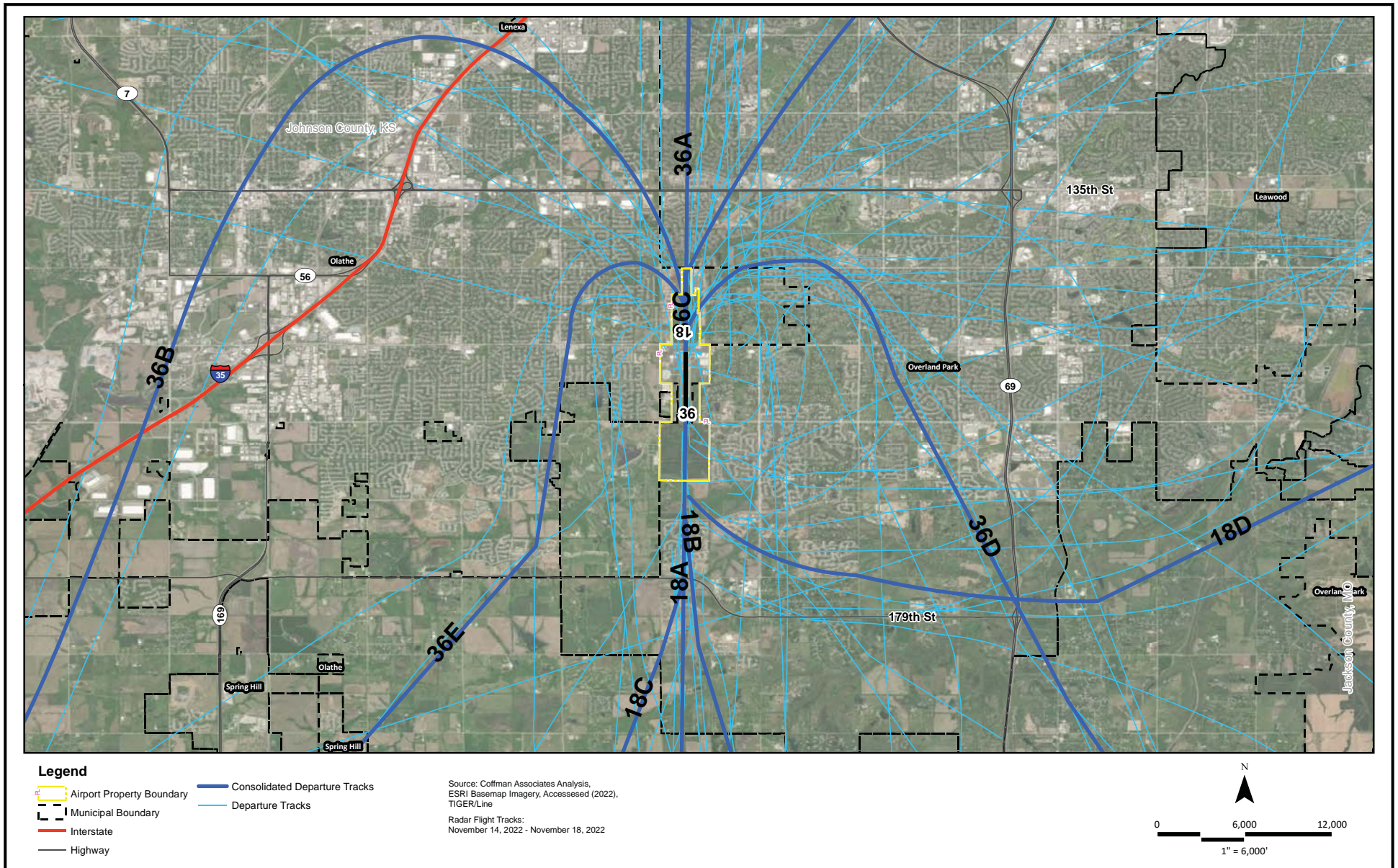


Arrival Flight Tracks





Departure Flight Tracks





Helicopter Flight Tracks

